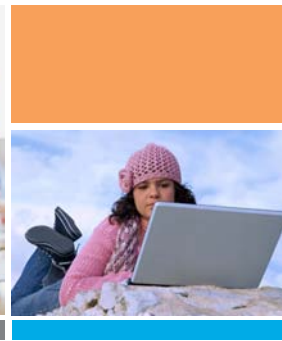
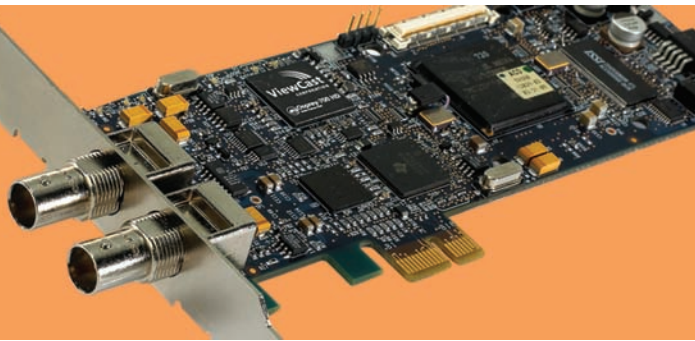




High Definition Streaming Video



VIEWCAST DIGITAL VIDEO CAPTURE CARDS

INTERNET TV | IPTV | VOD | ARCHIVING

The Osprey-700 HD: High-Definition Audio/Video Capture

Introducing the new Osprey-700 HD high-definition video capture card, the latest Osprey card designed for the PCI Express® (PCIe)® bus.

By utilizing the high-speed PCI Express bus, the Osprey-700 HD provides the bandwidth required for high-resolution video capture in applications for a wide range of Standard and HD resolutions including 1080i (60/59.94/50 Hz) and 720p (60/50 Hz).

The Osprey-700 HD offers HD-SDI/SD-SDI video input with up to 16 embedded SDI audio channels (eight stereo pairs), and it supports extraction of vertical blanking interval (VBI) data for closed captioning and teletext applications.

Designed for Live™ Adaptive Features

The Osprey-700 HD Card lets you automatically adapt to input signal format changes without having to stop, reconfigure, and restart your video application. This newest "Designed for Live" feature distinguishes the Osprey-700 HD from cards used for ingesting video into video editing systems or other applications. With this card you can:

- **Switch On-the-Fly Between SD and HD** — The Osprey-700 HD accepts all ATSC SD and HD video standards and will automatically re-sync, without interruption, when the signal format changes between any of the supported SD and HD modes.
- **Anything In, Same Thing Out Video** — The Osprey-700 HD can automatically adapt (size and scale) the incoming video to match the selected output parameters. You can freely switch between a live HD studio feed, SD promo clip from a playback server, back to live HD, etc. — without touching a thing!
- **Instant VOD** — The Osprey-700 HD makes it easy to instantly publish your live streaming content. Configure separate live and archived versions of the same live content — separate watermarks, separate sizing, cropping, scaling, etc. — to minimize or eliminate post-processing time and resources.

FEATURES

- Extraction of Vertical Blanking Interval (VBI) Data: Closed Captioning, Teletext
- PCIe-compatible (1x)
- Osprey SimulStream® Ready
- Video Processing Applications:
 - Bob, Weave and Adaptive Deinterlace
 - Spatial Downsampling
 - Temporal Downsampling
 - RGB, YUV Format Conversion
 - Contrast, Brightness, Hue, Gamma
- Windows XP®
- Windows® 2003 and Windows Vista™ (January 2008)

SPECIFICATIONS

- Video/Audio Input/Output: SDI
- Video Signal: SDI Standard Definition and High-Definition
- Audio Signal: Embedded SDI Audio (16 Channels or 8 Stereo Pair)
- Video Input Formats
 - NTSC
 - PAL
 - HD 720P 60
 - HD 720P 59.94
 - HD 1080I 60
 - HD 1080I 59.94
 - HD 1080I 50

For more information on ViewCast products, visit www.viewcast.com.