

Flip4Mac® XDCAM Component v2.1

For Final Cut Pro

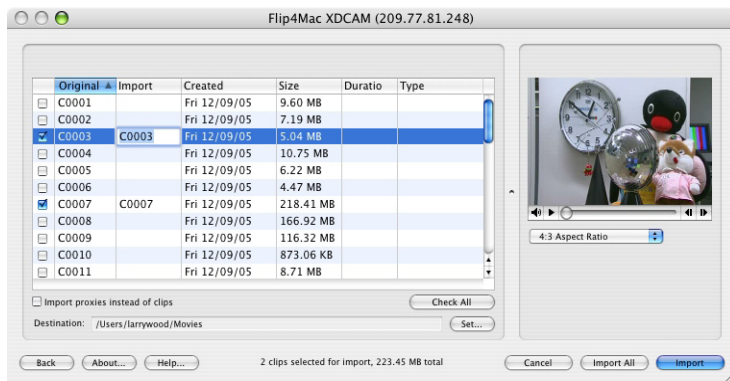
MXF

- Import from and export to Sony XDCAM and Final Cut Pro
- Edit HDV, DV or native IMX MPEG media on your Mac
- Increase your productivity

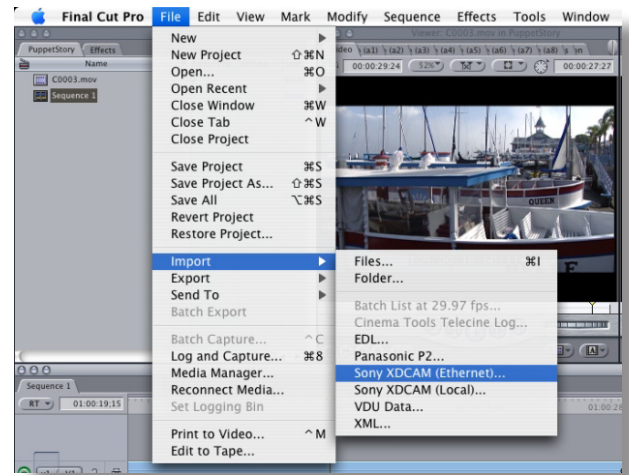
Now Macintosh users can benefit from an all-digital, file-based media workflow. Ingest from Sony XDCAM digital acquisition tools to Apple's Final Cut Pro real-time editing software – using the Flip4Mac XDCAM Component.

Flip4Mac XDCAM Component provides direct ingest from Sony XDCAM Camcorders and Compact Decks for HDV, DV or IMX MPEG editing. Flip4Mac XDCAM Component places a .mov file directly into your project bin. File transfer is performed over a Gigabit Ethernet connection for fast transfer of low-res proxies or high-res media files.

With Flip4Mac XDCAM Component, users can import and browse Sony systems for quick, easy access – without going to baseband video. New file preview enables easy scene preview and selection prior to import. Now you get the clips you want, when you want them – right in your Final Cut Pro project bin.



It's easy to connect, preview and rename clips you are importing



Import XDCAM Media from the Final Cut Pro Import Menu

Flip4Mac XDCAM Component Product Features

- Import HDV 1080 50/60i media
- Import DV25 media
- Import IMX 30, 40, 50 media
- Export IMX 30, 40, 50 media
- Preview and import MPEG-4 proxy
- Preview and rename clips before import
- File transfer via Gigabit Ethernet connection

Supported Digital Acquisition

- Sony XDCAM Camcorder
- Sony PDW-1500, Sony PDW-F70 and other compact decks

System Requirements

- Mac Intel and PowerPC OS X v10.4 or later
- Final Cut Pro 5 or later
- QuickTime v7.0 or later

Available Now: price \$495



For more informaton - visit Flip4Mac.com

Specifications subject to change without notice. Copyright © 2007 Telestream, Inc. Telestream and Flip4Mac are registered trademarks of Telestream, Inc. All other trademarks are the property of their respective owners.

Aug 2007

Contact us at:
www.flip4mac.com
Nevada City, CA USA
tel +1 530 470 1300