

# Flip4Mac® Infinity Component

For Final Cut Pro

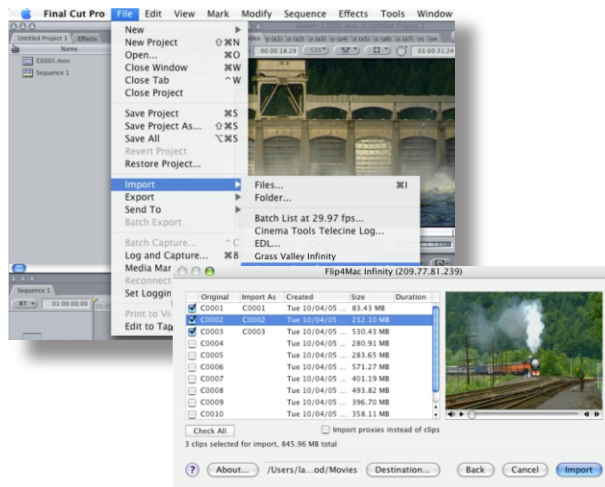
MXF

- Import from Grass Valley Infinity Series Digital Media Camcorder and REV PRO drives
- Edit DV or native IMX MPEG media on your Mac

Now Macintosh users can benefit from an all-digital, file-based media workflow. Import MXF-based media from Grass Valley Infinity Series Digital Media Camcorder directly to Apple Final Cut Pro 5 real-time editing software – using the new Flip4Mac Infinity Component.

Flip4Mac Infinity Component imports DV25 media directly from Grass Valley REV PRO drives without transcoding the media file. Flip4Mac Infinity Import Component produces a .mov file that is placed right into your project bin. Simply drag and drop the clip on your timeline, and you are ready to edit.

With the Flip4Mac Infinity Component, Mac users can import and browse REV PRO drives for quick, easy access – without going to baseband video. This means a faster, more efficient, file-based workflow that provides greater efficiency and productivity for you.



## Flip4Mac Infinity Component Features

- Import DV25, IMX D-10 MPEG media
- File transfer via USB 2.0 connection

## Supported Digital Acquisition and Editing Systems

- Grass Valley Infinity Series Digital Media Camcorder via REV PRO drives
- Apple Final Cut Pro v5 or later

## System Requirements

- Final Cut Pro 5
- Mac OS X v10.4 or later
- QuickTime v7.0 or later

Available now: price \$495



For more informaton - visit [Flip4Mac.com](http://Flip4Mac.com)

Specifications subject to change without notice. Copyright © 2007 Telestream, Inc. Telestream and Flip4Mac are registered trademarks of Telestream, Inc. All other trademarks are the property of their respective owners.

Aug 2007

Contact us at:  
[www.flip4mac.com](http://www.flip4mac.com)  
Nevada City, CA USA  
tel +1 530 470 1300